

GROVES & FOUNTAINS not to be missed!

The Versailles groves, designed by André Le Nôtre, are small enclosed areas hidden at the heart of the wooded parts of the Château's garden. The 15 groves are decorated with fountains, vases and statues, accessed by secret paths. They brought surprise and fantasy to the Royal Garden. Louis XIV and his court went there for light meals, to listen to music or dance. The King could also enjoy gambling and the theatre in these open air drawing rooms exclusively dedicated to entertainment and amusement.

THE GRAND PERSPECTIVE

A major road link runs from east to west through the entire city of Versailles connecting the royal domain to Paris. Within the park, from the Water Garden to the Grand Canal, passing by Latona's Fountain, the Great Lawn, and Apollo's Fountain, this link designed by André Le Nôtre in the 1660s is called the Grand Perspective.

LATONA'S FOUNTAIN

The statues of this recently restored fountain illustrate the legend of Diana and Apollo's mother protecting her children against the insults of the peasants of Lycia and demanding vengeance from Jupiter who changed them into frogs. Latona's Fountain was built under Louis XIII and modified by Jules Hardouin-Mansart between 1687 and 1689. It is surrounded by the Lizard Pools.

APOLLO'S FOUNTAIN

Apollo's Fountain was dug under Louis XIII; Louis XIV had it decorated with the magnificent group in gilded lead, executed by Tuby, after drawings by Le Brun, representing Apollo on his chariot.

Georg Friedrich Handel • *The Coronation of King George II*
Esprit Antoine Blanchard • *Guerre des Tè Deum*
François-André Danican Philidor • *Messe du Roi Soleil*
Jean-Baptiste Lully • *Phaéton*

BALLROOM

Ballroom was designed and laid out by Le Nôtre between 1680 and 1685 and is the only grove to have survived in its original condition until today. It is decorated with a semi-circular cascade adorned with millstones and seashells brought back from the Indian Ocean and the Red Sea by the Royal Navy.

André Campra • *L'Europe galante*
Jean-Jacques Rousseau • *Le Devin du village*
Jean-Baptiste Lully • *Phaéton*

MIRROR POOL

Louis XIV commissioned the Mirror Pool in 1702. The Crystal Group shows rhythmical musical fountain displays, to the sound of music by Handel and Blamont, in the spirit of Le Nôtre, but with the latest technical methods.

Georg Friedrich Handel • *The Coronation of King George II*
François Colin de Blamont • *Guerre des Tè Deum*

COLONNADE GROVE

With its circular peristyle punctuated by 32 ionic columns, Colonnade is more of a "mineral" than a "green" grove and was designed by Jules Hardouin-Mansart in 1684.

Michel-Richard de Lalande
and Jean-Baptiste Lully • *Messe du Roi Soleil*
Jean-Baptiste Lully • *Phaéton*

ENCELADUS GROVE

The grove shows the Titan Enceladus, punished for his pride by the Mount Olympus gods. This composition by Le Nôtre was restored in 1997.

Marc-Antoine Charpentier • *Les Arts Florissans*
André Campra • *L'Europe galante*

APOLLO'S BATH GROVE

In 1776, this pre-romantic grove, landscaped by the painter Hubert Robert, was laid out in the fashionable style of the "folly" gardens of the time, with its surprising rock sheltering the three magnificent groups of marble sculptures of Apollo and the Nymphs (recovered from the Thetis Grotto, built by Louis XIV), created by Marsy, Guérin, Girardon and Regnaudin.

WATER THEATRE GROVE

This grove was designed by André Le Nôtre between 1671 and 1674; it was restored in 2015 by the landscape gardener Louis Benech for the contemporary garden and the sculptor Jean-Michel Othoniel for the sculpture-fountains.

Situated close to the Water Theatre Grove, the Golden Children Fountain was created in 1709 by Jules Hardouin-Mansart. After major restoration works it reopened in 2017.

NEPTUNE FOUNTAIN

Neptune Fountain was designed and dug out in the shape of a hemicycle as in antique theatres. Armed with his trident, Neptune, the ocean god, sends graceful sprays of water up into the sky.

Georg Friedrich Handel • *The Coronation of King George II*
François Colin de Blamont • *Guerre des Tè Deum*
Jean-Baptiste Lully • *Tè Deum*

THREE FOUNTAINS GROVE

Louis XIV quite probably designed this grove himself, but it was his faithful gardener Le Nôtre who supervised its execution from 1677 to 1679. A simple decor of lawn, marble, rockeries and shells, also remarkable because of the total absence of statues, gives it an elegant and graceful atmosphere.

Francesco Cavalli • *Missa 1660*

CHATEAU DE VERSAILLES



VERSAILLES
Spectacles
Château de

Water displays of automatic fountains
from 10am to 7pm and historical fountains
from 11am to 12pm and from 3:30pm to 5:30pm

Musical displays
from 10am to 7pm

Groves exceptionally open
from 9am to 7pm

Stroll in the gardens of the Château de Versailles

the Musical Fountains Show



MAP 2020

CHATEAU DE VERSAILLES

Fountains Shows of Versailles

The Musical Fountains Show

Saturdays and Sundays from April 4th to November 1st
 Tuesdays from May 19th to June 23rd
 Fridays, April 10th and May 8th,
 Thursday, May 21st, Tuesday, July 14th
 From 9am to 7pm

The Night Fountains Show

Saturdays from June 13th to September 19th
 From 8:30pm to 11:05pm

The Musical Gardens

Fridays from April 3rd to October 30th (except April 10th and May 8th)
 Tuesdays from April 7th to May 12th and from June 30th to October 27th (except July 14th)
 From 9am to 7pm

The Royal Serenade in the Hall of Mirrors

Saturdays from June 13th to September 19th
 5 sessions of 45 minutes
 From 6:30pm to 7:50pm

VERSAILLES FESTIVAL

Versailles Electro

2nd edition
 Party on the Terraces of Versailles

Line-up:
 Justice, Kittin B2B Busy P, L'Impératrice

Saturday, May 23rd
 From 8:30pm to 12am

Court costumes

Fêtes Galantes
 A fancy dress evening in the Hall of Mirrors
 Monday, June 1st at 6:30pm

The Grand Masked Ball of Château de Versailles

Orangery of Château de Versailles
 Saturday, June 20th from 11:30pm to dawn

Show at the Orangerie

Marie-Antoinette, a Queen's Destiny
 Fireworks Show at the Orangerie's Gardens

Groupe F, Fireworks
 Christophe Berthonneau, artistic direction

2nd, 3rd, 9th and 10th July at 10pm

Operas, Concerts, Theatre and Ballets

Royal Opera, Royal Chapel, Hall of Mirrors
The Royal Ballet of Night, Malandain
 Ballet Biarritz: *Marie-Antoinette*, Philippe Jaroussky and Valer Sabadus, Alexandre Tharaud, Hervé Niquet, Jakub Józef Orliński...

Musical Season

Every year the Royal Opera and the Royal Chapel of Château de Versailles welcome the greatest international artists for an exceptional program of concerts, operas and ballets.

INFORMATION - BOOKING

+33 (0)1 30 83 78 89 • www.chateauversailles-spectacles.fr



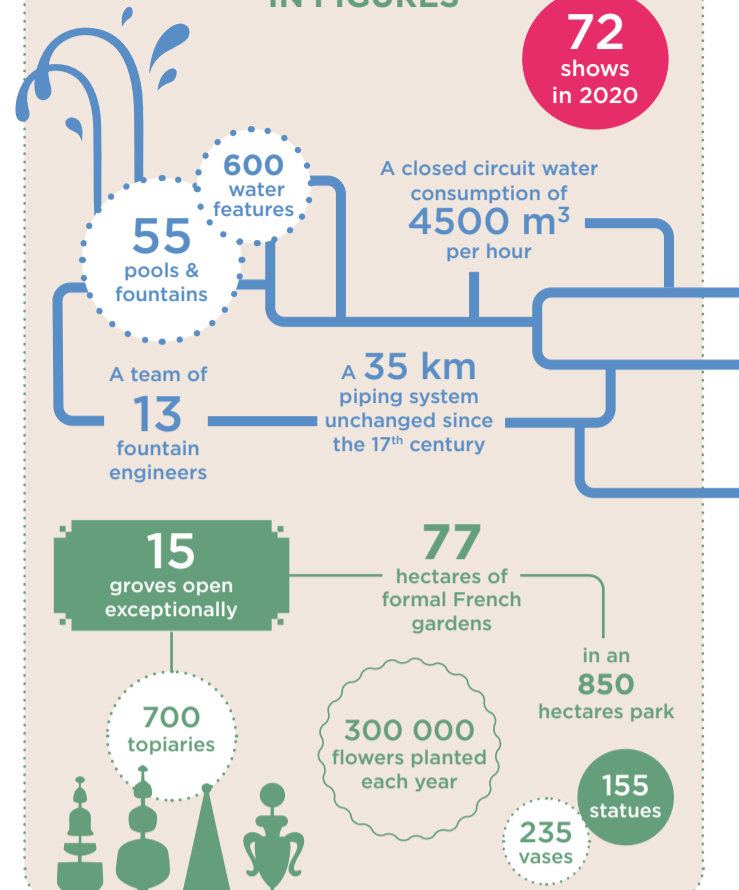
Administrative address: Château de Versailles Spectacles
 CS 10509 - 78008 Versailles Cedex



Cover: © J. de Givry. Do not litter.

THE MUSICAL FOUNTAINS SHOW IN FIGURES

72 shows in 2020



THE GROVES FROM THE SKY



View over the Great lawn, the Apollo's fountain and the Grand Canal. Partial view of the Colonnade grove (on the left), the Enceladus Grove and the Grove of the Domes (on the right).

CONTINUE THE EXPERIENCE



You want to know everything on the Château de Versailles and its estate?

Download the application "CHATEAU DE VERSAILLES"

Let the app guide you using the audio commentaries and explore without getting lost thanks to the interactive map and practical information.



The Fountains Show at home!

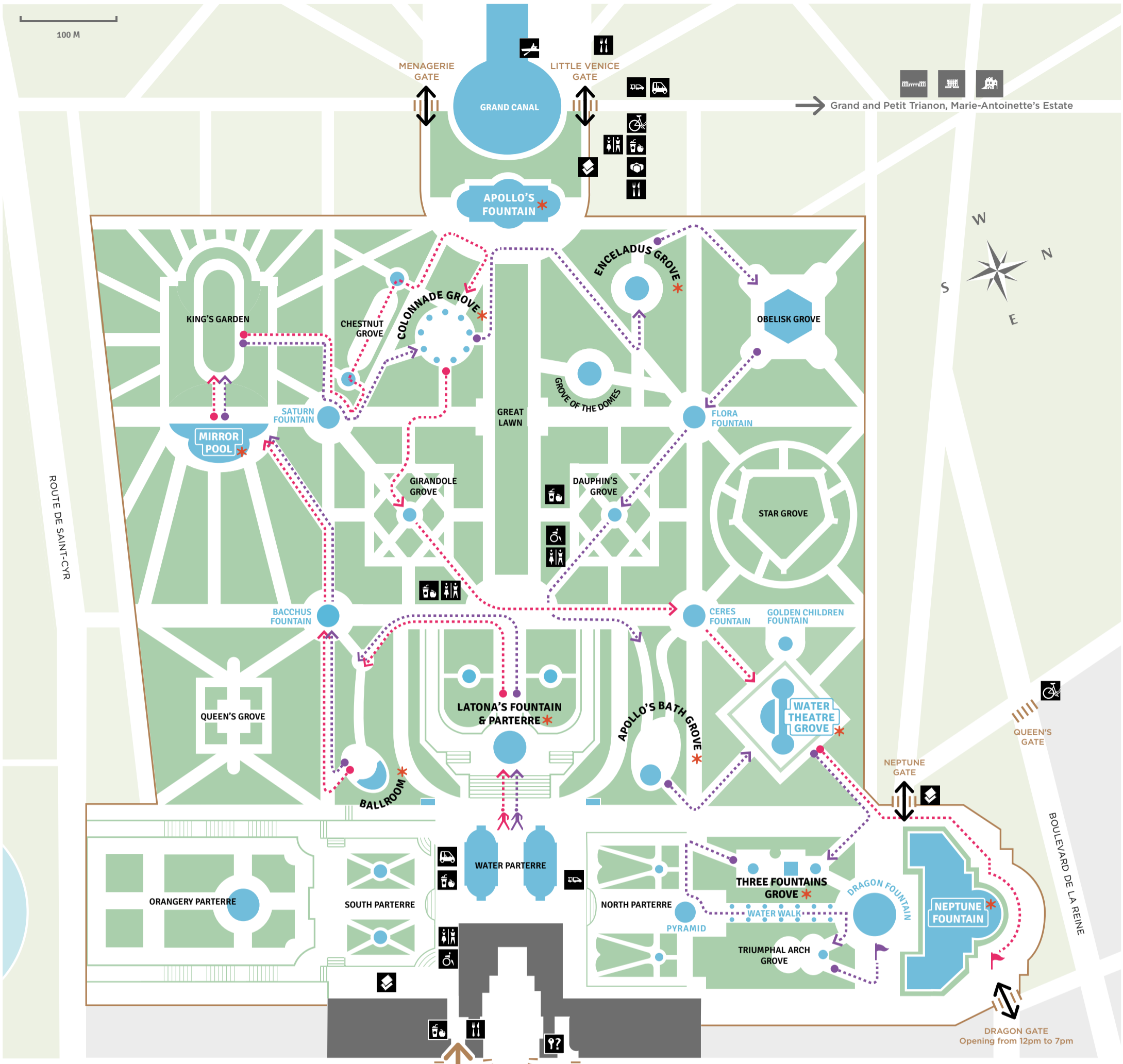
Rediscover the musical program of the Fountains Show of Versailles in the collection Château de Versailles Spectacles. Find out all CD and DVD on www.chateauversailles-spectacles.fr

Follow us on social networks

@chateauversailles.spectacles
 @CVSpectacles @chateauversailles.spectacles
 #MUSICALFOUNTAINSSHOW



100 M



TODAY IN THE GARDENS

Groves exceptionally open
9am > 7pm

Musical display
10am > 7pm

Automatic Fountains Water Displays

10am > 7pm
Every 10 minutes: Mirror Pool
Every 15 minutes: Neptune Fountain
Continuously: Water Theater Grove

Historical Fountains Water Displays

11am > 12pm Grand perspective:
Water Parterre, Latona's Fountain, Apollo's Fountain

11:15am > 11:45am Orangerie Parterre, Ballroom, Bacchus Fountain, Saturn Fountain, Chestnut Grove, Colonnade Grove, Girandole Grove

3:30pm > 5pm
All groves and fountains

5:20pm > 5:30pm
Historical water display of the Neptune Fountain

Water display or garden schedules may change. Please see information at the garden's entrances or in our website.

SUGGESTED WALKS

MORNING **Morning walk**
Estimated time: 1h30

AFTERNOON **Afternoon walk**
Estimated time: 2h

*** GROVES & FOUNTAINS NOT TO BE MISSED**

- Stairs
- Musical fountains show ticket office
- Information Château de Versailles ticket office
- Entrance / Exit
- Free toilets
- Facilities for visitors with reduced mobility
- Souvenirs Book shop
- Mini-train: circuit to Trianon
- Electric cars
- Bicycle rental
- Rowing boats
- Restaurants
- Snacks
- Lost and found

NOTICE TO VISITORS

Keep your ticket with you and show it at control points.
 No picnics are allowed inside the paying area. It is forbidden to walk or sit on lawns or to lean on or touch statues. The fountains' water is non-drinkable. Bathing is prohibited. Please observe instructions given by hospitality staff.



the Musical Fountains Show

Stroll in the gardens of the Château de Versailles

Groves exceptionally open
from 9am to 7pm

Musical displays
from 10am to 7pm

Water displays of automatical fountains
from 10am to 7pm and **historical fountains**
from 11am to 12pm and from 3:30pm to 5:30pm